

**COSMOPOLITAN**

WC968-000, Shiitake  
 Fiesta Collection

**TECHNICAL INFORMATION**

CATEGORY: Upholstery  
 CONTENT: 88% Polyester/12% Nylon  
 BACKING: Crypton® Moisture Barrier  
 FINISH: Crypton®  
 WIDTH: 54"  
 WEIGHT: 19.28 oz./ln yd  
 VISUAL REPEAT: None  
 SHOWN RAILROADED: No  
 DIRECTIONAL: Yes  
 APPROX. ROLL SIZE: 40 yards  
 APPLICATION: Indoor



**PERFORMANCE**



ABRASION RESISTANCE: Exceeds 100,000 Double Rubs\*  
 (Wyzenbeek/Cotton Duck)  
 BREAKING STRENGTH: Warp 220.0 / Fill 220.0  
 COLORFASTNESS TO CROCKING: Dry: Class 4 min/Wet: Class 4 min  
 COLORFASTNESS TO LIGHT: 40 hours  
 PILLING RESISTANCE: Class 5  
 SEAM SLIPPAGE: Warp 69.0 / Fill 79.0  
 LIQUID BARRIER  
 MILDEW RESISTANT

\* Multiple factors affect fabric durability and appearance retention, including end-user application and proper maintenance. Wyzenbeek results above 100,000 double rubs have not been shown to be an indicator of increased lifespan.

**REDUCED ENVIRONMENTAL IMPACT**

GREENGUARD GOLD CERTIFIED  
 PFAS FREE  
 NO FR ADDITIVES  
 FORMALDEHYDE FREE  
 PROP 65 COMPLIANT  
 REACH COMPLIANT  
 ROHS COMPLIANT  
 DOES NOT CONTAIN CONFLICT MINERALS

**FLAMMABILITY**

PASSES CAL TB 117-2013  
 NFPA 260/UFAC CLASS 1  
 AB 2998 COMPLIANT

## WARRANTY

STANDARD UPHOLSTERY | '5' FIVE YEAR WARRANTY  
See [Warranty Terms](#) for more information.

## DYE TRANSFER DISCLAIMER

Certain clothing and accessory dyes (such as those used on denim jeans) may migrate to lighter colors. This phenomenon is increased by humidity and temperature and is irreversible. Mayer Fabrics will not assume responsibility for dye transfer caused by external contaminants. Please check compatibility when using this product in combination with painted or varnished surfaces.

## ADDITIONAL INFORMATION

Custom Colors: All patterns can be custom colored. Minimum yardage applies.

Digital Swatch Color Matching: Due to color variations on different monitors and color printers, actual swatch colors may vary slightly. Please request a memo sample from Mayer Fabrics to ensure proper color representation.

## CLEANING & MAINTENANCE

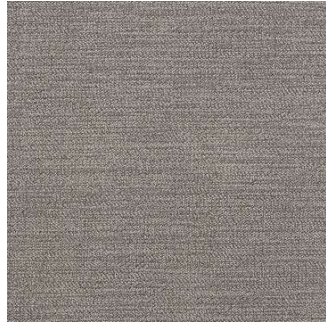
C: Crypton Cleaning - Crypton fabrics are available in various fiber types, and all Crypton fabrics can be cleaned with soap and water. For the best cleaning solution, use CRYPTON UPHOLSTERY CLEANER, available from Mayer Fabrics.

BC: Bleach Cleanable - 1 parts bleach, 9 parts water = 10% bleach, 90% water solution. Do not clean / disinfect fabric for longer than 10 minutes using the 10% bleach solution. Always rinse promptly with clean water after applying the bleach solution. Failure to do so will void any and all warranties.

**COSMOPOLITAN COLORS (14)**



**Shiitake**  
WC968-000



**Granite**  
WC968-010



**Marigold**  
WC968-002



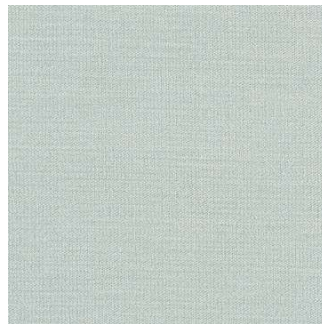
**Lemongrass**  
WC968-012



**Opal**  
WC968-003



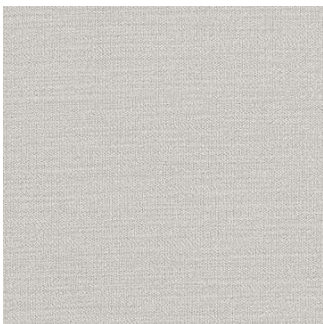
**Denim**  
WC968-004



**Horizon**  
WC968-014



**Shadow**  
WC968-006



**Mist**  
WC968-016



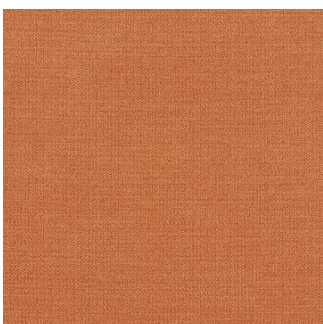
**Ecru**  
WC968-007



**Oatmeal**  
WC968-017



**Chalk**  
WC968-027



**Tangerine**  
WC968-009



**Saffron**  
WC968-019