

## KANTHA

CZ972-000, Cypress  
Stitch Collection

### TECHNICAL INFORMATION

CATEGORY: Upholstery  
CONTENT: 82% Polyester/18% Pre-Consumer Recycled Polyester  
BACKING: C-Zero™ Plus  
FINISH: C-Zero™ Plus - PFOA & PFOS Free  
WIDTH: 54"  
WEIGHT: 18.1 oz./ln yd  
VISUAL REPEAT: 7.25 in/18.42 cm H, 7.0 in/17.78 cm V  
SHOWN RAILROADED: No  
DIRECTIONAL: No  
APPROX. ROLL SIZE: 50 yards

### PERFORMANCE



ABRASION RESISTANCE: Passes 51,000 Double Rubs  
(Wyzenbeek/Cotton Duck)  
BREAKING STRENGTH: Warp 230.0 / Fill 411.0  
COLORFASTNESS TO CROCKING: Dry: Class 4 min/Wet: Class 3 min  
COLORFASTNESS TO LIGHT: 40 hours  
PILLING RESISTANCE: Class 4  
SEAM SLIPPAGE: Warp 84.0 / Fill 81.0  
LIQUID BARRIER

### FLAMMABILITY

PASSES CAL TB 117-2013  
NFPA 260/UFAC CLASS 1  
AB 2998 COMPLIANT



### REDUCED ENVIRONMENTAL IMPACT

GREENGUARD GOLD CERTIFIED  
PFAS FREE  
NO FR ADDITIVES  
HHI / GREENHEALTH COMPLIANT  
PROP 65 COMPLIANT  
MILLED IN AMERICA  
DOES NOT CONTAIN CONFLICT MINERALS

## WARRANTY

STANDARD UPHOLSTERY | '5' FIVE YEAR WARRANTY  
See [Warranty Terms](#) for more information.

## DYE TRANSFER DISCLAIMER

Certain clothing and accessory dyes (such as those used on denim jeans) may migrate to lighter colors. This phenomenon is increased by humidity and temperature and is irreversible. Mayer Fabrics will not assume responsibility for dye transfer caused by external contaminants. Please check compatibility when using this product in combination with painted or varnished surfaces.

## ADDITIONAL INFORMATION

Custom Colors: All patterns can be custom colored. Minimum yardage applies.

Digital Swatch Color Matching: Due to color variations on different monitors and color printers, actual swatch colors may vary slightly. Please request a memo sample from Mayer Fabrics to ensure proper color representation.

## CLEANING & MAINTENANCE

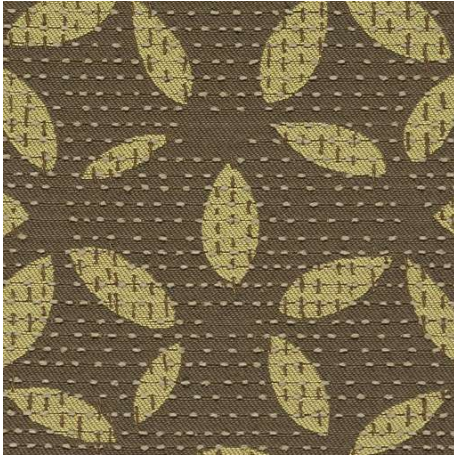
C: Crypton Cleaning - Crypton fabrics are available in various fiber types, and all Crypton fabrics can be cleaned with soap and water. For the best cleaning solution, use CRYPTON UPHOLSTERY CLEANER, available from Mayer Fabrics.

BC: Bleach Cleanable - 1 parts bleach, 9 parts water = 10% bleach, 90% water solution. Do not clean / disinfect fabric for longer than 10 minutes using the 10% bleach solution. Always rinse promptly with clean water after applying the bleach solution. Failure to do so will void any and all warranties.

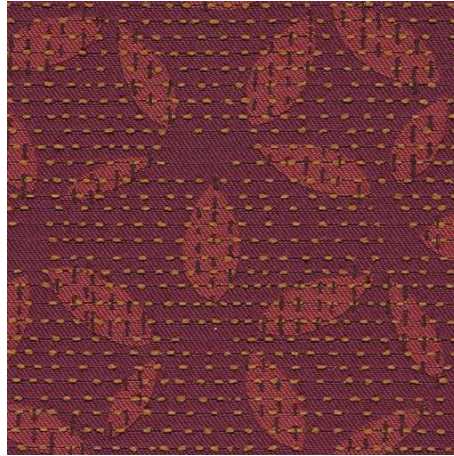


% of sales from this pattern will be donated to The Common Thread for the Cure.

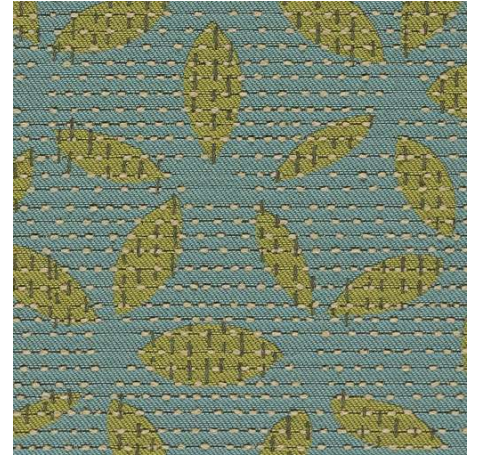
**KANTHA COLORS (8)**



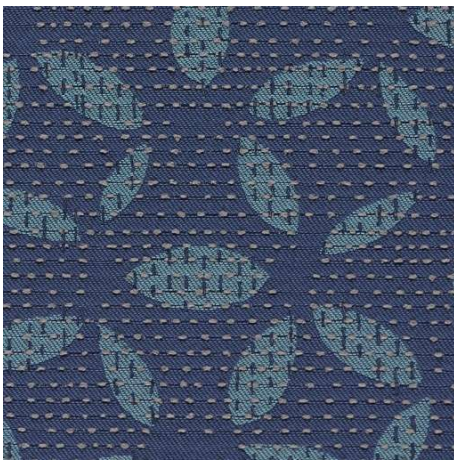
**Cypress**  
CZ972-000



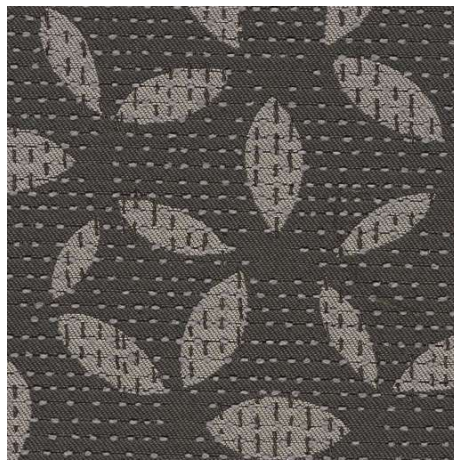
**Persimmon**  
CZ972-001



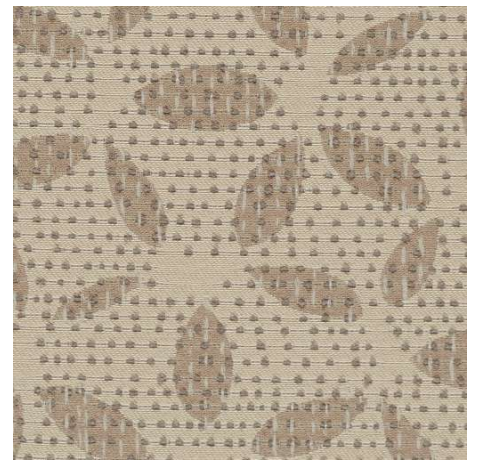
**Eucalyptus**  
CZ972-003



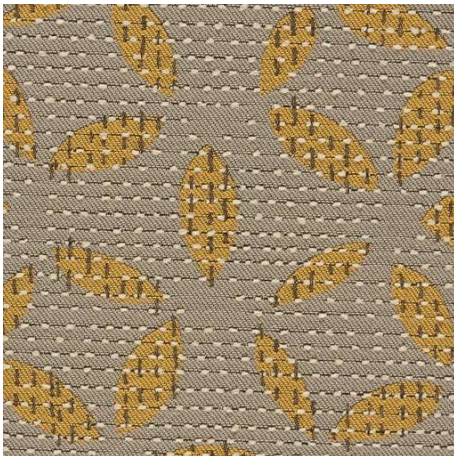
**Indigo**  
CZ972-004



**Darjeeling**  
CZ972-006



**Cocoon**  
CZ972-007



**Wheat**  
CZ972-017



**Bittersweet**  
CZ972-009