
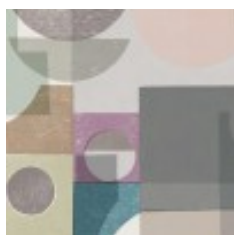
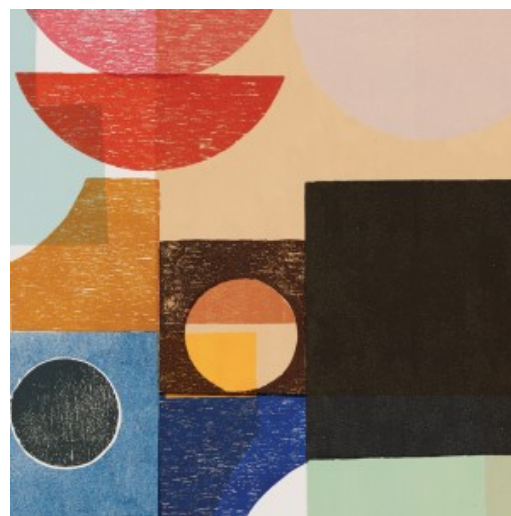


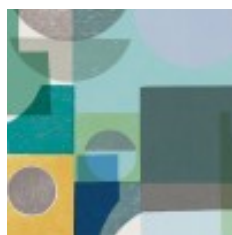
Designer	Ellie Malin
Use	Upholstery
Content	100% Polyester
Finish	Crypton
Backing	Acrylic, Fluid Barrier (Crypton)
Cleaning	Bleach (10:1), Water-based Modified (WM)
Weight	13 ounces/linear yard
Width	54 inches (137 cm)
Repeat	V 36 inches x H 54 inches (V 91.4 cm x H 137.2 cm)
Shown Railroaded	No
Flammability	CA TB 117-2013
Abrasion	100,000 Wyzenbeek double rubs (CD)
Lightfastness	40 hours
ACT	
Standards & Certifications	Healthier Hospitals*, Greenguard Gold
Material Chemistry	No Flame Retardants
Sustainable Logistics	Ships Carbon Neutral
Warranty	5 years
Origin	United States



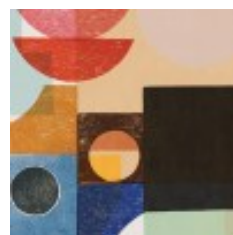
Hidden City  
3960-801



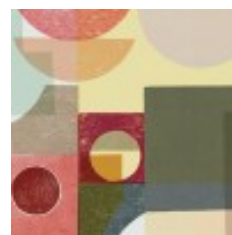
Shadow City  
3960-901



New City  
3960-902



Old City  
3960-903



Electric City  
3960-904